

Hawaiian Civic Club of Wahiawā... 'Ano'ai



"e kūka'awe i nā kapu o Kūkaniloko no ka mea aloha nō ho'i kākou ia lākou i nā kau a kau..."
 "to guard the kapu of Kūkaniloko because we love them for all time..."

*ka pa'i ana helu
 kanalima kūmamākolu
 Apelila 2k14*

Mahalo iā Kupuna Roselia Poepoe, Founding and Charter Member of 54 years... E ola nō!

Editor: Kalimapau

'Ōlelo No'eau...Mary Kawena Pukui...#1066 Ho'okāhi e pō'ino, pau pu i ka pō'ino...One meets misfortune, all meet misfortune. Said of those who are important to the community - when misfortune befalls one, it is a misfortune for all. The fall of an able leader is a disaster to his followers just as the fall of a good warrior is a disaster to the leader.
Every member of the group is important.

Mahalo pumehana to Officers and Members of the Hawaiian Civic Club of Wahiawā. "Every member of the group is important." For those who carry the responsibilities of leadership, thank you for your time dedicated to HCCW. Our nomination committee reported that there were no HCCW members interested in running for any of the HCCW Offices for the fiscal year of April 1, 2k14 – March 31, 2k15. The current HCCW Officers offered to continue to perform the duties of their Offices for the next fiscal year. Auntie Lei Cabana, however, is unable to continue her position as *Mea Pule*. Noelani DeVincent graciously accepted responsibilities as HCCW *Mea Pule* for the next year. The Officers:

Hawaiian Civic Club of Wahiawa Officers for 2014-2015

SECTION 5.2 ... PRESIDENT	Pelekikena	Marie "Malia" Doo
SECTION 5.2... VICE PRESIDENT	Hope Pelekikena Ekahi	Thomas Joseph Lenchanko
SECTION 5.4 ... SECRETARY	Kakau Olelo	Krystal-Lee Tabangcura
SECTION 5.5 ... TREASURER	Puuku	Jo-Lin Lenchanko Kalimapau
SECTION 5.6 ... HISTORIAN	Hoopaa Moolelo	Jo-Lin Lenchanko Kalimapau
SECTION 5.7 ... CHAPLAIN	Kahu	Peter Lonoae'a
Assistant to the Chaplain	Mea Pule	Andrea Noelani DeVincent
SECTION 5.8.....CHORAL DIRECTOR	Alakai Mele	Peter Lonoae'a
Sergeant At Arms	Volunteer	William Pila Short
O'ahu Council Permanent Member	Volunteer	Velma Aloha Kekipi

Installation of HCCW Officers for the fiscal year of 2014-2015 will be held on the second Wednesday of the month on June 11th, Kamehameha Day, at our regular monthly meeting to be held at the Wahiawā Police Station Conference Room at 7 pm. The address is 330 N. Cane Street, Wahiawā. Members in attendance to our last meeting voted to have a Potluck in celebration. Come. Bring your favorite dish and enjoy your fellow members for the evening.

Kanepu`u Native Drylands Forest Preserve Interpretive Trail, Lana`i Island

04.05.2k14...Hawaiian Civic Club of Wahiawā members visited **Nāna'i Kaulahea** or **Kaulawahine** now, **Lana'i Island...**Alan Calhoun, Wahiawā/Lana'i resident, is a volunteer at the Kanepu'u Native Dryland Forest Preserve. He took HCCW members on a special tour of most of the 600 acres of the Preserve. We walked the Self Guided Trail envisioning such a beautiful walk on the shoreline of Lake Wilson bordering the 500 acres surrounding Kūkaniloko.



Photos by Vicki Pakele - Kamehameha Butterfly



Dedicated to Kupuna o Lana'i



HCCW members on the go to Lana'i Island

Hawaiian Civic Club of Wahiawā... 'Ano'ai



"e kūka'awe i nā kapu o Kūkaniloko no ka mea aloha nō ho'i kākou ia lākou i nā kau a kau..."
 "to guard the kapu of Kūkaniloko because we love them for all time..."

*ka pa'i ana helu
 kanalima kūmamākolu
 Apelila 2k14*

Mahalo iā Kupuna Roselia Poepoe, Founding and Charter Member of 54 years... E ola nō!

Editor: Kalimapau



Well established 'Iliahi discovered on the 600 acres of Kanepu'u Native Dryland Forest Preserve are fenced to protect them from human traffic and feral animals of Lana'i. The beautiful *napua'Iliahi* were vibrant and strong. HCCW plans to soon reforest 'Iliahi along with *Koa* on the 500 acres surrounding Kūkaniloko Birthstones State Monument...

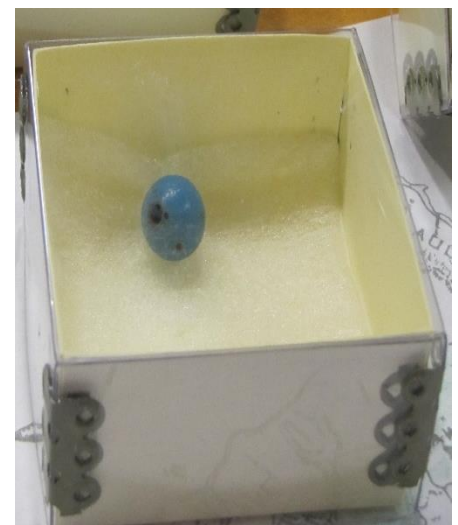


Simon Seisho Tajiri, Program Manager of the Lana'i Culture & Heritage Center welcomed HCCW members on our visit to see their collection. *Lālā 'ōiwi* Vicki Pakele discovered a display there answering our questions to the description of a similar blue glass bead discussed in the Wheeler Army Consultations with the Family earlier in January 2k14. She also surprisingly found roots of her Pakele 'Ohana in photographs and genealogy on the walls. We were indeed privileged to meet Kepa and 'Onaona Maly there. Here is the text and photo from the display of glass beads similar to those found on the BAX at Schofield. The photo on the right is a part of the Wheeler Army collection...



Lei Palaoa and 'Ani'ani (Ivory & Glass Beads)

Shortly after western contact with the Hawaiian Islands, trade items were exchanged for collectables of native origin. Among trade items were colored glass beads brought by Russian explorers. Hawaiians of Chiefly rank had glass beads strung into adornments such as *lei niho palaoa* (whale tooth pendants) and with ivory beads which became popular in the early 1800's. These ivory and glass beads were restrung in to a lei.
...The glass bead to the right was found on Schofield Barracks, O'ahu Island, having similar characteristics to the glass bead on display in the Lana'i Museum, Lana'i Island...



Hawaiian Civic Club of Wahiawā... 'Ano 'ai



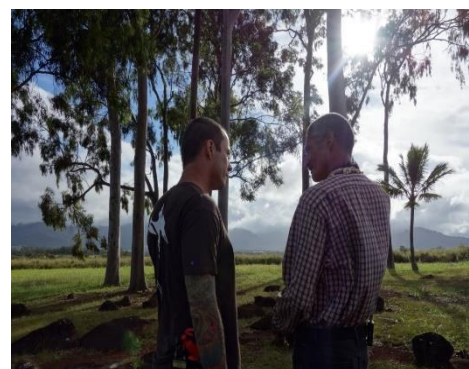
"e kūka'awe i nā kapu o Kūkaniloko no ka mea aloha nō ho'i kākou ia lākou i nā kau a kau..."
"to guard the kapu of Kūkaniloko because we love them for all time..."

*ka pa'i ana helu
kanalima kūmamākolū
Apelila 2k14*

Mahalo iā Kupuna Roselia Poepoe, Founding and Charter Member of 54 years... E ola nō!

Editor: *Kalimapau*

4.16.14...HCCW First Hawaiian Bank CD matured on April 16, 2014. Fundraising efforts allowed the Hawaiian Civic Club of Wahiawā to deposit funds and increase the CD to the amount of \$5,000 for the Lurline Hinano Lee Scholarship Fund. We are seeking volunteers for the Scholarship Committee. Our first Scholarship distribution will be in 2015.



Photos from the Family Ingredients Website

05.14.14...E ho'omaika'i HCCW lālā 'ōiwi kahu Tom Lenchanko and HCCW lālā ho'okama, Producer Dan Nakasone.. The pilot for the new Food-travel show "Family Ingredients" is the first Hawaii production to be picked up by the Public Broadcasting System (PBS) for its national prime-time roster and it has been nominated for three Emmy Awards in the Northern California chapter, of which Hawaii is a part. This episode began with a visit to *kalana* Kūkaniloko with *kahu* Tom Lenchanko. His brief description of our *wahi pana* concluded with an ancient teaching rooted in the *mana* of the *piko*, Kūkaniloko: **'ike 'āina** – know your family; **malama 'āina** – take care of your family; and **aloha 'āina** – Love your family. A beautiful introduction to sharing the source of our way of life...**Aloha!** Also featured were long-time Wahiawa family businesses Peterson Egg Farm and Honda Tofu Factory. Congratulations! PBS Emmy Categories are: Lifestyle – Program; Special Photography – Program; and Editor - Program (Non-News)



6.14.14...Kamehameha Day Ho'olaulea at Kaka'ako Park from 10 a.m. to 3 p.m...HCCW will be having a booth at this event. Members will be sharing our Kūkaniloko Educational Display as well as the Nā Wahine o Kunia Educational Display. Members will also be selling eyelash *lei*, *lau ki lei* and *haku lei po'o*, *lauhala* products, Nā Wahine O Kunia & Kūkaniloko t-shirts and be giving small workshops on making *lauhala* bracelets and bookmarks. Join us.

Word of the month... interpolation – to alter, as a text, by the insertion of new matter, esp. deceptively or without authorization; to insert, as new or spurious matter; interject; interpose; intercalate.

Next monthly meeting...on the 2nd Wednesday of June 11, 2014, Kamehameha Day Holiday...Join us for the installation of officers and bring your favorite potluck recipe for dinner...Wahiawa Police Station Conference Room at 330 N. Cane Street at 7 pm until pau. Bring your *ukulele* for *kanikapila a me mele...eō*